

**NORTHBROOKS
SECONDARY SCHOOL**
SOARING YET ROOTED

**National Digital
Literacy Programme
Sharing Session**



Agenda

- Video Presentation: Information on NDLP
- Important dates to take note
- Q&A Session



OVERVIEW OF NDLP AND PLD INITIATIVE

The National Digital Literacy Programme (NDLP)

1. The NDLP was launched in March 2020 to **make digital learning inclusive by equipping students with the digital skills** to be future-ready.
2. Under the NDLP, every secondary school student will **own a school-prescribed personal learning device (PLD)**. Students may use funds from their Edusave Account to pay for the PLD.



OVERVIEW OF NDLP AND PLD INITIATIVE

Intended Outcomes of the PLD Initiative

The use of the PLD for teaching and learning aims to:



**Support the
Development of Digital
Literacy**



**Support Self-Directed
and Collaborative
Learning**



**Enhance Teaching and
Learning**

Supporting Students in the Safe and Effective Use of the Devices



SAFE AND EFFECTIVE USE OF DEVICES

Cyber Wellness Concerns Identified by International Studies



Harmful Online Content

50% of Singaporean teenagers are exposed to cyber threats and 28% of them are exposed to violent content.

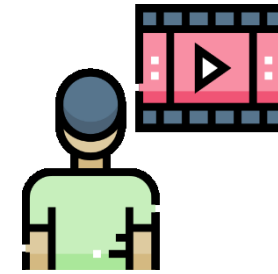
(COSI, 2020)



Distraction from Learning

72% of teens feel compelled to immediately respond to texts, social posts and notifications.

(Kimball & Cohen, 2019)



Excessive Screen Time

Teens who don't sleep enough report higher levels of depressive symptoms than well-rested peers (31% vs. 12%).

(Kimball & Cohen, 2019)

SAFE AND EFFECTIVE USE OF DEVICES

Supporting Students in the Safe and Effective Use of the Devices

The school has measures in place to enable a safer digital environment for learning with the use of PLDs, e.g.

- Classroom management and routines
- Educating students on Cyber Wellness
- Partnering parents/guardians to ensure that students are well-supported in their use of technology for learning
- Device Management Application (DMA)



Cyber Wellness Education

Cyber Wellness lessons will feature significantly in the CCE2021 lessons.

Students

Respectful, Safe and Responsible users of technology

Cyber Use

Cyber Identity

Peer Support
Culture

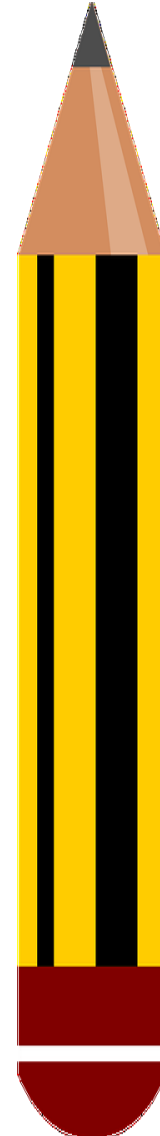
Cyber Wellness
Etiquette

Cyber
Relationships

Cyber
Citizenship

Cyber Ethics

Cyber Wellness
Ambassadors



Cyber Wellness Education (Parents)

Model good digital habits for your child.

Set **ground rules** for internet use.

Have **conversations** with your child about safe and responsible use of technology.

Navigate the internet together to **understand** their usage.



Role of the DMA in Providing a Safer Digital Environment for Learning



PROVIDING A SAFER DIGITAL ENVIRONMENT FOR LEARNING

Device Management Application Installation

- Your child's/ward's PLD will be installed with a Device Management Application (DMA) to provide a safer digital environment for learning.
- Installation of the DMA will be performed after the collection of the device. Students will be guided on the installation.
- This applies to both devices purchased through the school and pre-existing student-owned devices.
- The DMA will be **funded by MOE** and will be **uninstalled** from the device **when your child/ward graduates/leaves the school**.



PROVIDING A SAFER DIGITAL ENVIRONMENT FOR LEARNING

In-School DMA Settings (Default)

Schools will determine DMA settings for **in-school use**. As a default, these settings will continue to be in place after school as well:

- MOE and the school will set the level of web content filtering, including filtering out objectionable content or content that may not be conducive to teaching and learning (e.g. social media, pornography, gambling, or websites containing extremist content)
- The school will determine the apps and programs to be installed to support teaching and learning



PROVIDING A SAFER DIGITAL ENVIRONMENT FOR LEARNING

Providing Parents/Guardians with Greater Choice for After-School PLD Use

The school will provide parents/guardians with more information on exercising the options.

Default	Option A	Option B
In-school DMA settings will continue after school hours	Parents/Guardians can modify the DMA settings after school hours	Parents/Guardians can choose to disable DMA after school hours
For parents/guardians who want their child’s/ward’s use of the devices to be restricted only to teaching and learning, and prefer to leave it to the school to decide on DMA settings after school hours.	For parents/guardians who want more leeway over the use of the device, and prefer to take charge of the level of restrictions for their child’s/ward’s use of the device after school hours.	For parents/guardians who do not want their child’s/ward’s use of the device to be regulated by DMA after school.

- Having default school settings continue after school hours is the best option for parents/guardians who prefer not to, or do not feel ready to manage their child’s/ward’s device use on their own.
- Parents/guardians can request to change their choice of DMA settings at any time.

PROVIDING A SAFER DIGITAL ENVIRONMENT FOR LEARNING

Providing Parents/Guardians with Greater Choice for After-School PLD Use

	Default	Option A	Option B
Protecting students from objectionable content	MOE/school sets level of web content filtering	Parents/Guardians can apply additional content filtering	No content filtering
Reduce distractions from learning through control of applications	Parents/Guardians and students <u>unable</u> to install additional applications	Parents/Guardians and/or students can install applications after school hours, but these applications are disabled during school hours	
Limit screen time	School sets hours during which students are able to use the device online	Parents/Guardians can modify the amount of screen time*	No control over screen time

*Screen time limits set by the school will override parents'/guardians' settings during school hours.

Providing Parents/Guardians with Greater Choice for After-School PLD Use

	Default	Option A	Option B
Parent/guardian account	Provided to allow monitoring of PLD activities after school hours		Not provided
Monitor students' cyber activities	Parents/Guardians can track their child's/ward's browser history after school hours		Parents/Guardians will <u>not</u> be able to monitor or control their child's/ward's use of the device through the DMA after school hours No data* will be collected during use of PLD after school hours

PROVIDING A SAFER DIGITAL ENVIRONMENT FOR LEARNING

Deciding on the Choice of After-School DMA Option

Parents/guardians may wish to consider the following questions before deciding on the choice of after-school DMA option which is best for your child's/ward's learning.

1. Child's/ward's current device usage habits

- How much time does my child/ward spend on their device?
- How well is my child/ward able to regulate their device usage on their own?
- Does my child/ward get easily distracted while doing online learning?

2. Parents'/Guardians' involvement

- How confident and familiar am I with managing my child's/ward's cyber wellness?
- Are there existing routines and open conversations on the use of the Internet at home?
- Am I aware of how to prevent different types of cyber threats that my child/ward might face?



Have a conversation with your child/ward to talk about which setting is best for your child's/ward's learning.



PROVIDING A SAFER DIGITAL ENVIRONMENT FOR LEARNING

Data Collected by the DMA

The DMA does **NOT** collect any of the following data:

- Login IDs and passwords entered into websites or into any applications
- Actions performed (e.g. posts, online comments, items added to a shopping cart, etc.) when visiting websites and using apps
- Documents and photos stored in the PLDs
- PLD location
- Webcam videos and microphone recordings

Acceptable Use Policy (AUP)

- The school will be sharing the AUP with the Parents and Students.
- Parents can refer to the AUP when helping to manage his/her child's use of the PLD.
- The AUP will help your child to **understand the expectations of device use to enable a conducive learning environment.**
- It also **outlines the consequences** for violating the policy.



PROVIDING A SAFER DIGITAL ENVIRONMENT FOR LEARNING

Additional Resources for Parents

To support you in keeping your child/ward safe online, you may refer to these additional resources:

- Parent Handbooks (I) and (II) on Learning with a Personal Learning Device (shared by the school)
- Parent Kit on Cyber Wellness for Your Child (<https://go.gov.sg/moe-cyber-wellness>)
- Schoolbag article 'Keeping our teens safe online' (<https://www.schoolbag.edu.sg/story/keeping-our-teens-safe-online>)
- MOE Cyber Wellness Programme (<https://www.moe.gov.sg/programmes/cyber-wellness/>)
- Media Literacy Council (<https://go.gov.sg/better-internet-sg>)
- National Library's Learning & Information Literacy Resources (<https://sure.nlb.gov.sg/>)
- TOUCH Community Services (<https://help123.sg>)



Device and Funding Information



Personal Learning Device

10.2"
Retina display

Launched in
2021

The school will be using the
9th Gen Apple iPad for teaching
and learning.

Total Cost with GST: \$834.60*



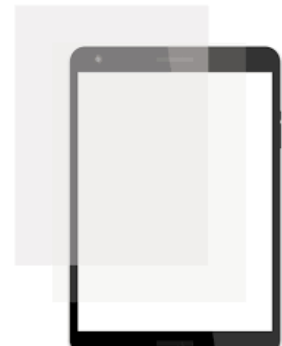
A12
Bionic
chip

Storage: 64 GB

Wi-Fi
487 g



Personal Learning Device Bundle



Screen Protector

Enhanced Device Bundle

The Enhanced Device Bundle that includes:

- 1) a 9th Gen Apple iPad (10.2"), 64GB,
- 2) a Logitech Ruggedized Combo 3 and
- 3) a Logitech Crayon Digital Pencil for iPad
- 4) a Matte Screen Protector

- * 3-year warranty and 3-year insurance (iPad only)
- * 2 repairs or 1 replacement claim



Incredible for
creativity and
learning

Two great
cameras

Augmented
reality

Powerful and
efficient

Easy
to use

Private and
secure

Advanced
sensors



Microphone

Unmatched
apps

Supports
Apple Pencil

Immersive
and
engaging

Take it
anywhere

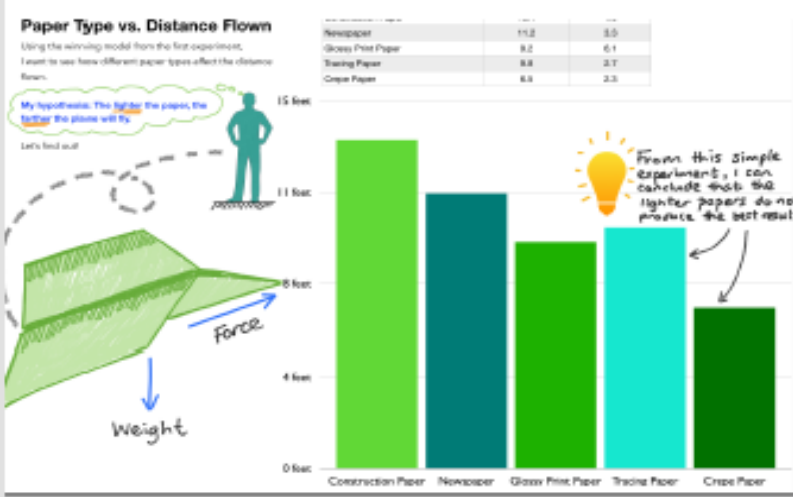
Always
connected

Compatibility



Cost Effectiveness





DAVID'S FAVORITE DINOSAUR

There was so much to see in the Halls of Ornithomischian and Saurischian Dinosaurs! There was a Spinosaurus and a Triceratops—and they were huge.

Height Comparison: 85 feet (dinosaur) vs. 4 feet (me)

My favorite was the exhibit that showed T rex (short for Tyrannosaurus rex). The T rex is a carnivorous dinosaur, which means that it eats other animals. "Tyrannosaurus rex" means "tyrant lizard king."

The Famous Tower Today

1. The tower opened to the public in 2001. Millions visit it each year.
2. There are 251 steps from the bottom to the top of the tower. A famous tourist activity is climbing to the top.
3. The seven bells at the top have not rung in a century. Engineers were worried that if they were rung, their movements would make the tower lean even more.
4. Engineers predict that it'll be over two centuries before someone has to intervene with the tilt.
5. Tourists love having photos taken of them pretending to push the tower.

Great Paper! Really interesting and a good balance of historical facts and physics!

THE LEANING TOWER OF PISA FINAL REPORT

Apps to Create

Museum of Natural History

DINOSAURS

DAVID'S FAVORITE DINOSAUR

There was so much to see in the Halls of Ornithomischian and Saurischian Dinosaurs! There was a Spinosaurus and a Triceratops—and they were huge.

Height Comparison: 85 feet (dinosaur) vs. 4 feet (me)

My favorite was the exhibit that showed T rex (short for Tyrannosaurus rex). The T rex is a carnivorous dinosaur, which means that it eats other animals. "Tyrannosaurus rex" means "tyrant lizard king."

AFRICAN MAMMALS

JANE'S TOP 3 ANIMALS

We really had a lot of fun! There were so many different kinds of animals. I didn't know that there were so many different kinds of animals in Africa.

The giraffe was the first one I saw. It was really tall and thin and had a long neck. It was really cool to see it in the wild.

The lion was the first one I saw. It was really big and had a long mane. It was really cool to see it in the wild.

Museum of Natural History

A DAY AT THE MUSEUM

1. Halls of Ornithomischian and Saurischian Dinosaurs

2. Halls of New York City Birds and Birds of the World

Done

News

Students eligible for subsidy	Remarks
Students under MOE FAS	one off subsidy of \$350.00 will be provided with the remaining balance be paid through your child's Edusave.
Students under School-based FAS	A one off subsidy of \$200.00 will be provided with the remaining balance be paid through your child's Edusave.
Non FAS SC Students & IS/SPR	<p>Payment will be in full through Edusave for SC students. In the event that Edusave is insufficient, the remaining balance will be paid in cash.</p> <p>IS/SPR will pay by cash.</p>

* Please approach the school if additional help is required.



what's next?

WHAT'S NEXT?

For Singapore Citizens (SC) Students

Time Frame	Activity
18 Feb 2022	Submit Letter to Parents for Procurement which includes the following annexes: <ul style="list-style-type: none">• Intent to purchase• Use of Edusave• Collection of PLD Through Parental Gateway
Term 2*	Collection of devices by students

(Government & Government-Aided Schools) Personalised Digital Learning Programme

Purchase of Personal Learning Device (PLD)

5. I wish to purchase the PLD bundle facilitated by the school.

Please note that the PLD bundle will come installed with a Device Management Application (DMA).

X NO

✓ YES

6. Is your child / ward a Singapore Citizen?

X NO

✓ YES

7. I would like to use my child's / ward's Edusave to purchase the PLD bundle

MOE will set up a PDLP Standing Order for your child to ensure that Edusave is deducted when your child is billed for the PDLP using School Bill.

X NO

✓ YES

I understand that where there are insufficient Edusave funds to pay for the PLD bundle, I will pay for the remaining balance in cash.

** Subjected to availability of stocks. Confirmed date and details of collection will be shared nearer the date.*

WHAT'S NEXT?

For Permanent Residents / International Students

Time Frame	Activity
18 Feb 2022	Submit Letter to Parents for Procurement which includes the following annex: <ul style="list-style-type: none">• Intent to purchase• Collection of PLD Through hardcopy letter
Await school billing	Parent/Guardian to make payment via Giro/PayNow/ Cheque/etc.
Term 2*	Collection of devices by students

** Subjected to availability of stocks. Confirmed date and details of collection will be shared nearer the date.*



WHAT'S NEXT?

Letter to Parents for Procurement



Parents with Singpass can access the Letter to Parents for Procurement to indicate your consent via the following link:

<For Government and Government-aided Schools, use>

<https://go.gov.sg/pdipadmin> *

* Parents/Guardians without Singpass can request for the hardcopy letter via your child's/ward's form teacher.



WHAT'S NEXT?

Collection of Devices

- The default mode of collection is for your child / ward to collect his / her PLD in school and verify the condition of the computing device.
- The Vendor will run through a device checklist with your child / ward at the point of collection to ensure that the device is in good working condition, and for your child / ward to verify the condition of the device.
- If you are concerned that your child / ward will not be able to properly verify the condition of the PLD, you should not authorise your child / ward as your proxy, and instead arrange to either collect the PLD personally or appoint an adult proxy.

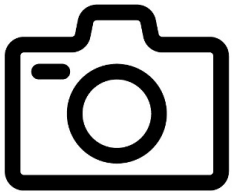
*Please approach the school for further advice or clarification.



WHAT'S NEXT?

Important Contacts / Helplines

To access / find out more about...	Contact / Helpline
This deck of slides	https://northbrookssec.moe.edu.sg/ (after 7th Feb 2022)
Edusave balance	6260 0777 (official MOE hotline)
Financial assistance	67524311 (school general office)





SOARING YET ROOTED



Thank You